

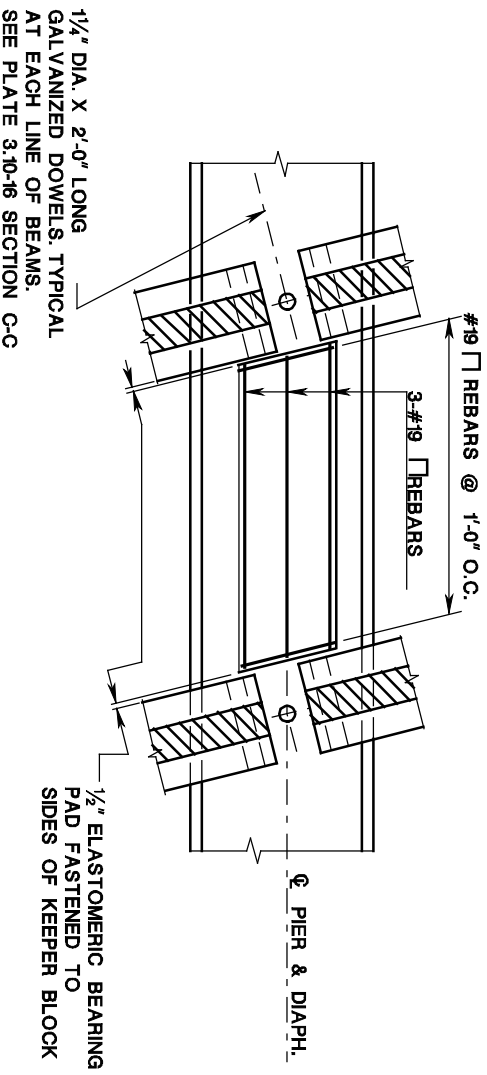
# CONTINUITY DESIGN FOR LIVE LOAD, PC I-BEAM KEEPER BLOCKS

ISSUED: 2009

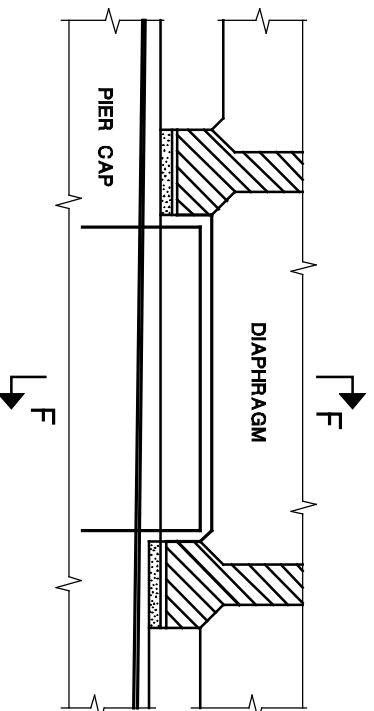
PLATE  
3.10-18

ALSO SEE PLATES

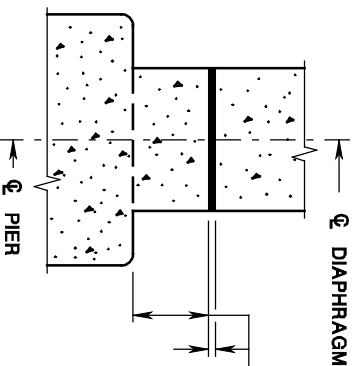
3.10-15  
3.10-16  
3.10-17



**TYPICAL TOP VIEW**  
(DIAPHRAGMS NOT SHOWN)



**TYPICAL ELEVATION**



## NOTES TO DESIGNER:

1. KEEPER BLOCK TO BE LOCATED IN CENTER (OR NEXT TO CENTER) BAY.
2. THESE DETAILS MAY BE UTILIZED IN THE SEISMIC RETROFIT OF APPLICABLE PROJECTS.